

## Descriptive Statistics

	Mean	Std. Deviation <sup>a</sup>	Analysis N <sup>b</sup>	Missing N
QH101_11 Source of drinking water: Robinent dans logement	.04	.195	5627	0
QH101_12 Source of drinking water: Robinent dans cour/parcelle	.15	.354	5627	0
QH101_13 Source of drinking water: Robinent chez un voisin	.03	.172	5627	0
QH101_14 Source of drinking water: Robinent public/borne fontaine	.21	.404	5627	0
QH101_21 Source of drinking water: Puits à pompe ou forage	.24	.428	5627	0
QH101_31 Source of drinking water: Puits protégé	.13	.335	5627	0
QH101_32 Source of drinking water: Puits non protégé	.15	.360	5627	0
QH101_41 Source of drinking water: Source protégée	.01	.075	5627	0
QH101_42 Source of drinking water: Source non protégée	.01	.101	5627	0
QH101_51 Source of drinking water: Eau de pluie	.02	.127	5627	0
QH101_61 Source of drinking water: Camion citerne	.00	.048	5627	0
QH101_71 Source of drinking water: Charrette avec petite citerne/tonneau	.01	.078	5627	0
QH101_81 Source of drinking water: Eau de surface (rivière/barrage/lac/mare/fleuve/ canal/canal d'irrigation	.01	.105	5627	0
QH101_91 Source of drinking water: Eau en bouteille	.00	.023	5627	0
QH101_92 Source of drinking water: Eau en sachet	.00	.038	5627	0
QH105_11 Type of toilet facility: Chasse d'eau connectée à un système d'égout	.01	.119	5627	0
QH105_12 Type of toilet facility: Chasse d'eau connectée à une fosse septique	.03	.166	5627	0
QH105_13 Type of toilet facility: Chasse d'eau connectée à une fosse d'aisances	.02	.123	5627	0
QH105_14 Type of toilet facility: Chasse d'eau connectée à quelque chose d'autre	.00	.038	5627	0
QH105_15 Type of toilet facility: Chasse d'eau connectée à ne sait pas où	.00	.027	5627	0
QH105_21 Type of toilet facility: Fosse d'aisances améliorée auto-aérée	.02	.123	5627	0
QH105_22 Type of toilet facility: Fosse d'aisances avec dalle	.28	.450	5627	0
QH105_23 Type of toilet facility: Fosse d'aisances sans dalle trou ouvert	.26	.441	5627	0
QH105_31 Type of toilet facility: Toilettes à compostage	.00	.067	5627	0
QH105_51 Type of toilet facility: Toilettes/latrines suspendues	.02	.122	5627	0
QH105_61 Type of toilet facility: Pas de toilettes/nature	.15	.357	5627	0
QH105_96 Type of toilet facility: Seau/tinette, Autre	.00	.023	5627	0
QH105_12_sh Type of toilet facility: Chasse d'eau connectée à une fosse septique - shared	.01	.097	5627	0
QH105_13_sh Type of toilet facility: Chasse d'eau connectée à une fosse d'aisances - shared	.01	.079	5627	0
QH105_21_sh Type of toilet facility: Fosse d'aisances améliorée auto-aérée - shared	.01	.082	5627	0
QH105_22_sh Type of toilet facility: Fosse d'aisances avec dalle - shared	.13	.331	5627	0
QH105_23_sh Type of toilet facility: Fosse d'aisances sans dalle trou ouvert - shared	.06	.229	5627	0
QH105_51_sh Type of toilet facility: Toilettes/latrines suspendues - shared	.00	.069	5627	0
QH109_1 Type of cookstove: Cuisinière électrique	.00	.027	5627	0
QH109_3 Type of cookstove: Cuisinière à gaz propane liquide (GPL)/Cuisinière à gaz	.01	.081	5627	0
QH109_4 Type of cookstove: Cuisinière connectée au gaz naturel	.00	.035	5627	0
QH109_5 Type of cookstove: Cuisinière au biogaz ou combustible liquide	.00	.033	5627	0
QH109_7 Type of cookstove: Cuisinière d'un fabricant à combustible solide	.21	.408	5627	0
QH109_8 Type of cookstove: Cuisinière traditionnelle à combustible solide	.28	.450	5627	0
QH109_9 Type of cookstove: Foyer à trois pierres/foyer ouvert	.46	.499	5627	0
QH109_95 Type of cookstove: Pas de cuisine dans le ménage	.03	.182	5627	0
QH110_3 Type of cooking fuel: Alcool/éthanol ou Paraffine/Pétrole	.00	.023	5627	0
QH110_4 Type of cooking fuel: Charbon/lignite	.01	.098	5627	0
QH110_5 Type of cooking fuel: Charbon de bois	.23	.423	5627	0
QH110_6 Type of cooking fuel: Bois	.70	.459	5627	0
QH110_9 Type of cooking fuel: Bouse d'animal/déchets	.01	.112	5627	0
QH110_96 Type of cooking fuel: Autre	.00	.040	5627	0
QH116A Electricity	.33	.470	5627	0
QH116B Radio	.66	.473	5627	0
QH116C Television	.45	.498	5627	0
QH116D Telephone (non-mobile)	.02	.146	5627	0
QH116E Computer	.07	.252	5627	0
QH116F Refrigerator	.14	.346	5627	0
QH116G Chaise en matériaux traditionnels	.64	.481	5627	0
QH116H Armoire/Bibliothèque	.24	.426	5627	0
QH116I Réchaud	.06	.238	5627	0
QH116J Cuisinière, à gaz ou électricité	.08	.267	5627	0
QH116K Un foyer amélioré	.11	.309	5627	0
QH116L Un climatiseur	.04	.206	5627	0
QH116M Un accès à l'internet à la maison	.18	.387	5627	0
QH116N Un panneau solaire	.47	.499	5627	0
QH116O Un groupe électrogène	.02	.125	5627	0
QH117B Bicycle	.38	.485	5627	0
QH117C Motorcycle or scooter	.61	.488	5627	0
QH117D Animal-drawn cart	.40	.489	5627	0
QH117E Car or Truck	.07	.263	5627	0
QH117F Boat with a motor	.01	.075	5627	0
QH117G Charrue	.37	.483	5627	0
QH117H Pirogue	.04	.204	5627	0

## Component Score Coefficient Matrix

	Component 1	Sum over each variable	
		If has	If does not have
QH101_11 Source of drinking water: Robinent dans logement	.034	0.166722309	-0.006847799
QH101_12 Source of drinking water: Robinent dans cour/parcelle	.059	0.142555345	-0.024630759
QH101_13 Source of drinking water: Robinent chez un voisin	.012	0.065372683	-0.002048887
QH101_14 Source of drinking water: Robinent public/borne fontaine	-.006	-0.011895021	0.003075519
QH101_21 Source of drinking water: Puits à pompe ou forage	-.025	-0.045053612	0.014317974
QH101_31 Source of drinking water: Puits protégé	-.016	-0.040924105	0.006071801
QH101_32 Source of drinking water: Puits non protégé	-.029	-0.068801505	0.012446358
QH101_41 Source of drinking water: Source protégée	.002	0.03235072	-0.000185026
QH101_42 Source of drinking water: Source non protégée	-.006	-0.05505399	0.000573376
QH101_51 Source of drinking water: Eau de pluie	-.003	-0.025437464	0.000422809
QH101_61 Source of drinking water: Camion citerne	.005	0.102666747	-0.000237739
QH101_71 Source of drinking water: Charrette avec petite citerne/tonneau	.008	0.096772951	-0.000588285
QH101_81 Source of drinking water: Eau de surface (rivière/barrage/lac/mare/fleuve/ canal/canal d'irrigation	-.008	-0.070986942	0.000803777
QH101_91 Source of drinking water: Eau en bouteille	.006	0.253533651	-0.000135242
QH101_92 Source of drinking water: Eau en sachet	.005	0.145304662	-0.002006876
QH105_11 Type of toilet facility: Chasse d'eau connectée à un système d'égout	.031	0.258507622	-0.003775535
QH105_12 Type of toilet facility: Chasse d'eau connectée à une fosse septique	.039	0.228556625	-0.006689054
QH105_13 Type of toilet facility: Chasse d'eau connectée à une fosse d'aisances	.026	0.207801487	-0.003225217
QH105_14 Type of toilet facility: Chasse d'eau connectée à quelque chose d'autre	.007	0.188465156	-0.000268326
QH105_15 Type of toilet facility: Chasse d'eau connectée à ne sait pas où	.005	0.199655104	-0.000142027
QH105_21 Type of toilet facility: Fosse d'aisances améliorée auto-aérée	.007	0.05840719	-0.000906518
QH105_22 Type of toilet facility: Fosse d'aisances avec dalle	.008	0.013301097	-0.005224961
QH105_23 Type of toilet facility: Fosse d'aisances sans dalle trou ouvert	-.036	-0.059565143	0.021414093
QH105_31 Type of toilet facility: Toilettes à compostage	-.004	-0.060087756	0.000268153
QH105_51 Type of toilet facility: Toilettes/latrines suspendues	-.004	-0.034095604	0.000522939
QH105_61 Type of toilet facility: Pas de toilettes/nature	-.025	-0.060518303	0.010678956
QH105_96 Type of toilet facility: Seau/tinette, Autre	-.001	-0.03771099	2.01161E-05
QH105_12_sh Type of toilet facility: Chasse d'eau connectée à une fosse septique - shared	.011	0.116079826	-0.001124764
QH105_13_sh Type of toilet facility: Chasse d'eau connectée à une fosse d'aisances - shared	.010	0.120436015	-0.000753802
QH105_21_sh Type of toilet facility: Fosse d'aisances améliorée auto-aérée - shared	.010	0.115412348	-0.000784697
QH105_22_sh Type of toilet facility: Fosse d'aisances avec dalle - shared	.022	0.057182736	-0.008190538
QH105_23_sh Type of toilet facility: Fosse d'aisances sans dalle trou ouvert - shared	-.013	-0.051863392	0.003034145
QH105_51_sh Type of toilet facility: Toilettes/latrines suspendues - shared	.003	0.050110124	-0.000241602
QH109_1 Type of cookstove: Cuisinière électrique	.008	0.29609771	-0.000210633
QH109_3 Type of cookstove: Cuisinière à gaz propane liquide (GPL)/Cuisinière à gaz	.015	0.187882666	-0.001243588
QH109_4 Type of cookstove: Cuisinière connectée au gaz naturel	.006	0.169819425	-0.000211519
QH109_5 Type of cookstove: Cuisinière au biogaz ou combustible liquide	.008	0.239106389	-0.000255228
QH109_7 Type of cookstove: Cuisinière d'un fabricant à combustible solide	.018	0.035135754	-0.009403306
QH109_8 Type of cookstove: Cuisinière traditionnelle à combustible solide	.036	0.057428541	-0.022658299
QH109_9 Type of cookstove: Foyer à trois pierres/foyer ouvert	-.050	-0.053595247	0.04603049
QH109_95 Type of cookstove: Pas de cuisine dans le ménage	-.004	-0.023726912	0.000842711
QH110_3 Type of cooking fuel: Alcool/éthanol ou Paraffine/Pétrole	.005	0.221809244	-0.000118319
QH110_4 Type of cooking fuel: Charbon/lignite	.016	0.165697321	-0.001635562
QH110_5 Type of cooking fuel: Charbon de bois	.065	0.117096027	-0.035745389
QH110_6 Type of cooking fuel: Bois	-.064	-0.042408358	0.097963306
QH110_9 Type of cooking fuel: Bouse d'animal/déchets	-.006	-0.056207533	0.000728522
QH110_96 Type of cooking fuel: Autre	.005	0.11593122	-0.000185721
QH116A Electricity	.079	0.112979073	-0.055159844
QH116B Radio	.013	0.009211451	-0.018126542
QH116C Television	.059	0.064831442	-0.053114412
QH116D Telephone (non-mobile)	.029	0.197005959	-0.004365981
QH116E Computer	.060	0.220155849	-0.01607927
QH116F Refrigerator	.069	0.170890248	-0.027664248
QH116G Chaise en matériaux traditionnels	.002	0.001642815	-0.002890839
QH116H Armoire/Bibliothèque	.070	0.125355854	-0.039221232
QH116I Réchaud	.053	0.210691421	-0.013549288
QH116J Cuisinière, à gaz ou électricité	.058	0.199985257	-0.016713576
QH116K Un foyer amélioré	.020	0.056535418	-0.006772999
QH116L Un climatiseur	.052	0.242999065	-0.011298078
QH116M Un accès à l'internet à la maison	.042	0.088132545	-0.01979386
QH116N Un panneau solaire	-.047	-0.050183422	0.044639317
QH116O Un groupe électrogène	.015	0.121530858	-0.001975398
QH117B Bicycle	-.016	-0.020481834	0.012447103
QH117C Motorcycle or scooter	.021	0.017007023	-0.026413358
QH117D Animal-drawn cart	-.049	-0.060292265	0.039608965
QH117E Car or Truck	.049	0.172905752	-0.013982582
QH117F Boat with a motor	.000	-0.00599907	3.4311E-05
QH117G Charrue	-.048	-0.061821902	0.036502531
QH117H Pirogue	-.013	-0.059637791	0.002714838

QH1171 Tracteur	.01	.115	5627	0
QH117J Motoculteur	.01	.120	5627	0
QH117K Semoir motorisé	.06	.245	5627	0
QH117L Moto tricycle	.05	.213	5627	0
MOBPHONE Owns a mobile phone	.91	.290	5627	0
CHECKACC Possession of a bank account	.20	.402	5627	0
QH132_11 Main floor material: Terre/sable/gravier	.53	.499	5627	0
QH132_12 Main floor material: Bouse	.02	.131	5627	0
QH132_21 Main floor material: Planches en bois	.00	.023	5627	0
QH132_22 Main floor material: Palmes/bambou	.01	.081	5627	0
QH132_31 Main floor material: Parquet ou bois ciré	.00	.055	5627	0
QH132_32 Main floor material: Bandes de vinyle/asphalte	.00	.023	5627	0
QH132_33 Main floor material: Carrelage	.07	.261	5627	0
QH132_34 Main floor material: Ciment	.35	.478	5627	0
QH132_35 Main floor material: Moquette	.01	.112	5627	0
QH132_96 Main floor material: Autre	.00	.023	5627	0
QH133_11 Main roof material: Pas de toit	.00	.038	5627	0
QH133_12 Main roof material: Chaume/palmes/feuilles/tiges de mil	.05	.218	5627	0
QH133_13 Main roof material: Mottes de terre	.24	.429	5627	0
QH133_21 Main roof material: Natte	.01	.118	5627	0
QH133_22 Main roof material: Palmes/bambou	.01	.110	5627	0
QH133_23 Main roof material: Planches en bois	.02	.147	5627	0
QH133_25 Main roof material: Bache/plastique	.01	.118	5627	0
QH133_31 Main roof material: Tole	.44	.497	5627	0
QH133_32 Main roof material: Bois	.06	.234	5627	0
QH133_33 Main roof material: Zinc/fibre de ciment	.01	.087	5627	0
QH133_34 Main roof material: Tuiles	.00	.048	5627	0
QH133_35 Main roof material: Ciment	.11	.318	5627	0
QH133_36 Main roof material: Shingles	.01	.085	5627	0
QH133_96 Main roof material: Carton ou Autre	.01	.104	5627	0
QH134_11 Main wall material: Pas de mur	.16	.363	5627	0
QH134_12 Main wall material: Bambou/cane/palme/tronc	.04	.194	5627	0
QH134_13 Main wall material: Terre	.19	.390	5627	0
QH134_21 Main wall material: Bambou avec boue	.03	.167	5627	0
QH134_22 Main wall material: Pierres avec boue	.01	.076	5627	0
QH134_23 Main wall material: Adobe non recouvert	.07	.247	5627	0
QH134_31 Main wall material: Ciment	.27	.442	5627	0
QH134_32 Main wall material: Pierres avec chaux/ciment	.00	.050	5627	0
QH134_33 Main wall material: Briques	.03	.172	5627	0
QH134_34 Main wall material: Blocs de ciment	.02	.140	5627	0
QH134_35 Main wall material: Adobe recouvert	.19	.393	5627	0
QH134_36 Main wall material: Planche en bois/shingles	.00	.061	5627	0
QH134_96 Main wall material: Autre	.00	.062	5627	0
LAND Owns land	.59	.492	5627	0
memsleep Number of members per sleeping room	2.36	1.577	5627	0

a. For each variable, missing values are replaced with the variable mean.

QH1171 Tracteur	.000	0.003303067	-4.5223E-05
QH117J Motoculteur	.001	0.00785278	-0.000116128
QH117K Semoir motorisé	-0.016	-0.060119486	0.004133571
QH117L Moto tricycle	.002	0.007091575	-0.000354645
MOBPHONE Owns a mobile phone	.016	0.005232192	-0.051061388
CHECKACC Possession of a bank account	.057	0.113683388	-0.028883232
QH132_11 Main floor material: Terre/sable/gravier	-0.056	-0.052754532	0.060201995
QH132_12 Main floor material: Bouse	-0.009	-0.063589286	0.00113881
QH132_21 Main floor material: Planches en bois	.000	0.005308793	-2.83186E-06
QH132_22 Main floor material: Palmes/bambou	-0.005	-0.056551317	0.000374311
QH132_31 Main floor material: Parquet ou bois ciré	.003	0.05442606	-0.000164927
QH132_32 Main floor material: Bandes de vinyle/asphalte	-0.001	-0.02723683	1.45289E-05
QH132_33 Main floor material: Carrelage	.062	0.219456211	-0.017383087
QH132_34 Main floor material: Ciment	.029	0.038956242	-0.021182791
QH132_35 Main floor material: Moquette	-0.003	-0.03063084	0.000391431
QH132_96 Main floor material: Autre	.001	0.022407959	-1.1953E-05
QH133_11 Main roof material: Pas de toit	-0.001	-0.025887104	3.68565E-05
QH133_12 Main roof material: Chaume/palmes/feuilles/tiges de mil	-0.018	-0.07841951	0.004137381
QH133_13 Main roof material: Mottes de terre	-0.029	-0.051423717	0.016485519
QH133_21 Main roof material: Natte	-0.006	-0.051076755	0.00073664
QH133_22 Main roof material: Palmes/bambou	-0.006	-0.058034411	0.00072047
QH133_23 Main roof material: Planches en bois	-0.001	-0.005064027	0.000114109
QH133_25 Main roof material: Bache/plastique	-0.004	-0.034728559	0.000494513
QH133_31 Main roof material: Tole	-0.001	-0.001609251	0.001281031
QH133_32 Main roof material: Bois	-0.006	-0.025752311	0.001583711
QH133_33 Main roof material: Zinc/fibre de ciment	.020	0.232708988	-0.001791993
QH133_34 Main roof material: Tuiles	.009	0.196149178	-0.000454211
QH133_35 Main roof material: Ciment	.060	0.166909071	-0.021420053
QH133_36 Main roof material: Shingles	.002	0.025295071	-0.00018566
QH133_96 Main roof material: Carton ou Autre	-0.007	-0.064167717	0.000714896
QH134_11 Main wall material: Pas de mur	-0.023	-0.053544425	0.009899348
QH134_12 Main wall material: Bambou/cane/palme/tronc	-0.014	-0.069431936	0.002838412
QH134_13 Main wall material: Terre	-0.020	-0.041357007	0.009554364
QH134_21 Main wall material: Bambou avec boue	-0.010	-0.05599043	0.001649188
QH134_22 Main wall material: Pierres avec boue	-0.004	-0.051222246	0.000302169
QH134_23 Main wall material: Adobe non recouvert	-0.016	-0.061316108	0.004290612
QH134_31 Main wall material: Ciment	.073	0.121229983	-0.043902216
QH134_32 Main wall material: Pierres avec chaux/ciment	.004	0.086931813	-0.000216826
QH134_33 Main wall material: Briques	.005	0.028437411	-0.000896652
QH134_34 Main wall material: Blocs de ciment	.016	0.109069502	-0.002215011
QH134_35 Main wall material: Adobe recouvert	-0.026	-0.054293864	0.01279256
QH134_36 Main wall material: Planche en bois/shingles	-0.005	-0.078100647	0.000292564
QH134_96 Main wall material: Autre	-0.001	-0.02218663	8.7084E-05
LAND Owns land	-0.061	-0.050929264	0.072862947
memsleep Number of members per sleeping room	-0.012	((memsleep-2.36076061844677)/1.57712360542499)*(-0.0117918245578577)	

Extraction Method: Principal Component Analysis.  
Component Scores.

## Component Score Coefficient Matrix

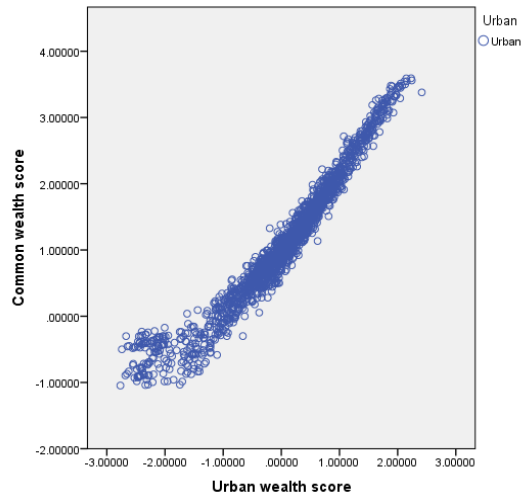
Descriptive Statistics	Component		
	Mean	Std. Deviation	Analysis N
QH101_11 Source of drinking water: Robinet dans logement	.11	.309	1696
QH101_12 Source of drinking water: Robinet dans cour/parcelle	.40	.491	1696
QH101_13 Source of drinking water: Robinet chez un voisin	.08	.269	1696
QH101_14 Source of drinking water: Robinet public/borne fontaine	.17	.374	1696
QH101_21 Source of drinking water: Puits à pompe ou forage	.08	.271	1696
QH101_31 Source of drinking water: Puits protégé	.08	.271	1696
QH101_32 Source of drinking water: Puits non protégé	.03	.161	1696
QH101_41 Source of drinking water: Source protégée	.01	.077	1696
QH101_42 Source of drinking water: Source non protégée	.00	.064	1696
QH101_51 Source of drinking water: Eau de pluie	.00	.069	1696
QH101_61 Source of drinking water: Camion citerne	.01	.084	1696
QH101_71 Source of drinking water: Charrette avec petite citerne/tonneau	.02	.132	1696
QH101_81 Source of drinking water: Eau de surface (rivière/barrage/lac/mare/fleuve/ canal/canal d'irrigation)	.01	.108	1696
QH101_91 Source of drinking water: Eau en bouteille	.00	.042	1696
QH101_92 Source of drinking water: Eau en sachet	.00	.059	1696
QH105_11 Type of toilet facility: Chasse d'eau connectée à un système d'égout	.05	.211	1696
QH105_12 Type of toilet facility: Chasse d'eau connectée à une fosse septique	.09	.287	1696
QH105_13 Type of toilet facility: Chasse d'eau connectée à une fosse d'aisances	.05	.213	1696
QH105_14 Type of toilet facility: Chasse d'eau connectée à quelque chose d'autre	.00	.069	1696
QH105_15 Type of toilet facility: Chasse d'eau connectée à ne sait pas où	.00	.049	1696
QH105_21 Type of toilet facility: Fosse d'aisances améliorée auto-aérée	.02	.146	1696
QH105_22 Type of toilet facility: Fosse d'aisances avec dalle	.29	.456	1696
QH105_23 Type of toilet facility: Fosse d'aisances sans dalle trou ouvert	.06	.244	1696
QH105_31 Type of toilet facility: Toilettes à compostage	.00	.034	1696
QH105_51 Type of toilet facility: Toilettes/latrines suspendues	.01	.087	1696
QH105_61 Type of toilet facility: Pas de toilettes/nature	.06	.242	1696
QH105_96 Type of toilet facility: Seau/tinette, Autre	.00	.024	1696
QH105_12_sh Type of toilet facility: Chasse d'eau connectée à une fosse septique - shared	.03	.176	1696
QH105_13_sh Type of toilet facility: Chasse d'eau connectée à une fosse d'aisances - shared	.02	.142	1696
QH105_21_sh Type of toilet facility: Fosse d'aisances améliorée auto-aérée - shared	.02	.132	1696
QH105_22_sh Type of toilet facility: Fosse d'aisances avec dalle - shared	.25	.435	1696
QH105_23_sh Type of toilet facility: Fosse d'aisances sans dalle trou ouvert - shared	.02	.154	1696
QH105_51_sh Type of toilet facility: Toilettes/latrines suspendues - shared	.01	.087	1696
QH109_1 Type of cookstove: Cuisinière électrique	.00	.049	1696
QH109_3 Type of cookstove: Cuisinière à gaz propane liquefie (GPL)/Cuisinière à gaz	.02	.136	1696
QH109_4 Type of cookstove: Cuisinière connectée au gaz naturel	.00	.064	1696
QH109_5 Type of cookstove: Cuisinière au biogaz ou combustible liquide	.00	.059	1696
QH109_7 Type of cookstove: Cuisinière d'un fabricant à combustible solide	.28	.450	1696
QH109_8 Type of cookstove: Cuisinière traditionnelle à combustible solide	.49	.500	1696
QH109_9 Type of cookstove: Foyer à trois pierres/foyer ouvert	.16	.369	1696
QH109_95 Type of cookstove: Pas de cuisine dans le ménage	.04	.189	1696
QH110_3 Type of cooking fuel: Alcool/éthanol ou Paraffine/Petrole	.00	.034	1696
QH110_4 Type of cooking fuel: Charbon/lignite	.03	.176	1696
QH110_5 Type of cooking fuel: Charbon de bois	.57	.495	1696
QH110_6 Type of cooking fuel: Bois	.32	.467	1696
QH110_9 Type of cooking fuel: Bouse d'animal/déchets	.00	.054	1696
QH110_96 Type of cooking fuel: Autre	.00	.069	1696
QH116A Electricity	.79	.410	1696
QH116B Radio	.69	.462	1696
QH116C Television	.73	.443	1696
QH116D Telephone (non-mobile)	.06	.229	1696
QH116E Computer	.20	.397	1696
QH116F Refrigerator	.37	.482	1696
QH116G Chaise en matériaux traditionnels	.61	.481	1696
QH116H Armoire/Bibliothèque	.55	.497	1696
QH116I Réchaud	.17	.377	1696
QH116J Cuisinière, à gaz ou électricité	.21	.407	1696
QH116K Un foyer amélioré	.13	.340	1696
QH116L Un climatiseur	.13	.331	1696
QH116M Un accès à l'internet à la maison	.35	.477	1696
QH116N Un panneau solaire	.10	.299	1696
QH166O Un groupe électrogène	.02	.155	1696
QH117B Bicycle	.22	.415	1696
QH117C Motorcycle or scooter	.68	.465	1696
QH117D Animal-drawn cart	.08	.266	1696
QH117E Car or Truck	.18	.384	1696
QH117F Boat with a motor	.00	.069	1696
QH117G Charrue	.06	.240	1696
QH117H Pirogue	.01	.103	1696

Component Score Coefficient Matrix	Component	Sum over each variable	
		If has	If does not have
QH101_11 Source of drinking water: Robinet dans logement	.029	0.084017007	-0.010037675
QH101_12 Source of drinking water: Robinet dans cour/parcelle	.047	0.057038355	-0.038740903
QH101_13 Source of drinking water: Robinet chez un voisin	-.012	-0.042331368	0.003602093
QH101_14 Source of drinking water: Robinet public/borne fontaine	-.009	-0.020689611	0.004178979
QH101_21 Source of drinking water: Puits à pompe ou forage	-.019	-0.063438154	0.005486323
QH101_31 Source of drinking water: Puits protégé	-.034	-0.115586018	0.009996228
QH101_32 Source of drinking water: Puits non protégé	-.038	-0.23237378	0.006333628
QH101_41 Source of drinking water: Source protégée	.002	0.027045403	-0.000160412
QH101_42 Source of drinking water: Source non protégée	-.014	-0.220037095	0.000911936
QH101_51 Source of drinking water: Eau de pluie	-.018	-0.258673313	0.00122594
QH101_61 Source of drinking water: Camion citerne	-.001	-0.012871272	9.17193E-05
QH101_71 Source of drinking water: Charrette avec petite citerne/tonneau	-.002	-0.018582782	0.000334624
QH101_81 Source of drinking water: Eau de surface (rivière/barrage/lac/mare/fleuve/ canal/canal d'irrigation)	-.027	-0.247628927	0.002954999
QH101_91 Source of drinking water: Eau en bouteille	.006	0.144231847	-0.000255579
QH101_92 Source of drinking water: Eau en sachet	.004	0.064553046	-0.00029182
QH105_11 Type of toilet facility: Chasse d'eau connectée à un système d'égout	.034	0.153362303	-0.007492654
QH105_12 Type of toilet facility: Chasse d'eau connectée à une fosse septique	.040	0.128521305	-0.012743849
QH105_13 Type of toilet facility: Chasse d'eau connectée à une fosse d'aisances	.022	0.096886515	-0.004859324
QH105_14 Type of toilet facility: Chasse d'eau connectée à quelque chose d'autre	.006	0.086668545	-0.000410751
QH105_15 Type of toilet facility: Chasse d'eau connectée à ne sait pas où	.004	0.085967072	-0.000203232
QH105_21 Type of toilet facility: Fosse d'aisances améliorée auto-aérée	.006	0.042486392	-0.000947557
QH105_22 Type of toilet facility: Fosse d'aisances avec dalle	.002	0.003016178	-0.001260944
QH105_23 Type of toilet facility: Fosse d'aisances sans dalle trou ouvert	-.025	-0.094371263	0.006418197
QH105_31 Type of toilet facility: Toilettes à compostage	.004	0.125212789	-0.000147831
QH105_51 Type of toilet facility: Toilettes/latrines suspendues	-.004	-0.048456548	0.000374293
QH105_61 Type of toilet facility: Pas de toilettes/nature	-.068	-0.261453796	0.017430253
QH105_96 Type of toilet facility: Seau/tinette, Autre	-.005	-0.190962841	0.000112662
QH105_12_sh Type of toilet facility: Chasse d'eau connectée à une fosse septique - shared	.001	0.007902442	-0.000259885
QH105_13_sh Type of toilet facility: Chasse d'eau connectée à une fosse d'aisances - shared	.002	0.015093511	-0.000318045
QH105_21_sh Type of toilet facility: Fosse d'aisances améliorée auto-aérée - shared	.006	0.041393058	-0.000745373
QH105_22_sh Type of toilet facility: Fosse d'aisances avec dalle - shared	-.003	-0.004941698	0.001683693
QH105_23_sh Type of toilet facility: Fosse d'aisances sans dalle trou ouvert - shared	-.020	-0.12531163	0.003104397
QH105_51_sh Type of toilet facility: Toilettes/latrines suspendues - shared	-.001	-0.015151388	0.000117034
QH109_1 Type of cookstove: Cuisinière électrique	.009	0.192316113	-0.000454648
QH109_3 Type of cookstove: Cuisinière à gaz propane liquefie (GPL)/Cuisinière à gaz	.011	0.07720117	-0.001484638
QH109_4 Type of cookstove: Cuisinière connectée au gaz naturel	.003	0.045673605	-0.000189293
QH109_5 Type of cookstove: Cuisinière au biogaz ou combustible liquide	.008	0.125925973	-0.000447074
QH109_7 Type of cookstove: Cuisinière d'un fabricant à combustible solide	.007	0.01172196	-0.004600244
QH109_8 Type of cookstove: Cuisinière traditionnelle à combustible solide	.022	0.022665762	-0.021747853
QH109_9 Type of cookstove: Foyer à trois pierres/foyer ouvert	-.026	-0.059301038	0.011476274
QH109_95 Type of cookstove: Pas de cuisine dans le ménage	-.039	-0.197548132	0.007621269
QH110_3 Type of cooking fuel: Alcool/éthanol ou Paraffine/Petrole	.007	0.214163909	-0.00025285
QH110_4 Type of cooking fuel: Charbon/lignite	.010	0.054541329	-0.001793686
QH110_5 Type of cooking fuel: Charbon de bois	.044	0.038053002	-0.051334659
QH110_6 Type of cooking fuel: Bois	-.039	-0.056972936	0.02683114
QH110_9 Type of cooking fuel: Bouse d'animal/déchets	-.014	-0.262275355	0.000775504
QH110_96 Type of cooking fuel: Autre	.002	0.027951041	-0.000132469
QH116A Electricity	.082	0.042667266	-0.156681725
QH116B Radio	.032	0.021487065	-0.048325314
QH116C Television	.081	0.048866295	-0.133682683
QH116D Telephone (non-mobile)	.032	0.131177544	-0.007697059
QH116E Computer	.063	0.127377775	-0.031120175
QH116F Refrigerator	.070	0.09191358	-0.052961356
QH116G Chaise en matériaux traditionnels	.033	0.026268422	-0.041852746
QH116H Armoire/Bibliothèque	.078	0.070189757	-0.086444227
QH116I Réchaud	.055	0.121847538	-0.02523675
QH116J Cuisinière, à gaz ou électricité	.057	0.110517952	-0.029361486
QH116K Un foyer amélioré	.033	0.084807635	-0.013038453
QH116L Un climatiseur	.059	0.15155109	-0.022284584
QH116M Un accès à l'internet à la maison	.038	0.051812506	-0.027711485
QH116N Un panneau solaire	-.021	-0.064185479	0.007057042
QH166O Un groupe électrogène	.027	0.169614757	-0.004307025
QH117B Bicycle	.031	0.058143762	-0.01650561
QH117C Motorcycle or scooter	.044	0.030188471	-0.065511804
QH117D Animal-drawn cart	-.035	-0.122739447	0.010189098
QH117E Car or Truck	.053	0.112930032	-0.024662881
QH117F Boat with a motor	.000	-0.004056006	1.92228E-05
QH117G Charrue	-.033	-0.130958633	0.008555087
QH117H Pirogue	-.018	-0.171985523	0.001844898

QH1171 Tracteur	.01	.087	1696
QH117J Motoculteur	.01	.094	1696
QH117K Semoir motorisé	.01	.091	1696
QH117L Moto tricycle	.03	.183	1696
MOBPHONE Owns a mobile phone	.95	.211	1696
CHECKACC Possession of a bank account	.41	.492	1696
QH132_11 Main floor material: Terre/sable/gravier	.25	.433	1696
QH132_12 Main floor material: Bouse	.00	.054	1696
QH132_21 Main floor material: Planches en bois	.00	.034	1696
QH132_22 Main floor material: Palmes/bambou	.01	.084	1696
QH132_31 Main floor material: Parquet ou bois ciré	.01	.073	1696
QH132_33 Main floor material: Carrelage	.22	.414	1696
QH132_34 Main floor material: Ciment	.51	.500	1696
QH132_35 Main floor material: Moquette	.01	.091	1696
QH132_96 Main floor material: Autre	.00	.024	1696
QH133_11 Main roof material: Pas de toit	.00	.034	1696
QH133_12 Main roof material: Chaume/palmes/feuilles/tiges de mil	.02	.125	1696
QH133_13 Main roof material: Mottes de terre	.09	.292	1696
QH133_21 Main roof material: Natte	.01	.097	1696
QH133_22 Main roof material: Palmes/bambou	.01	.080	1696
QH133_23 Main roof material: Planches en bois	.02	.154	1696
QH133_25 Main roof material: Bache/plastique	.01	.118	1696
QH133_31 Main roof material: Tole	.46	.498	1696
QH133_32 Main roof material: Bois	.05	.212	1696
QH133_33 Main roof material: Zinc/fibre de ciment	.02	.148	1696
QH133_34 Main roof material: Tuiles	.01	.084	1696
QH133_35 Main roof material: Ciment	.28	.449	1696
QH133_36 Main roof material: Shingles	.01	.105	1696
QH133_96 Main roof material: Carton ou Autre	.01	.097	1696
QH134_11 Main wall material: Pas de mur	.09	.281	1696
QH134_12 Main wall material: Bambou/cane/palme/tronc	.00	.054	1696
QH134_13 Main wall material: Terre	.08	.277	1696
QH134_21 Main wall material: Bambou avec boue	.01	.087	1696
QH134_22 Main wall material: Pierres avec boue	.00	.049	1696
QH134_23 Main wall material: Adobe non recouvert	.02	.142	1696
QH134_31 Main wall material: Ciment	.65	.478	1696
QH134_32 Main wall material: Pierres avec chaux/ciment	.00	.064	1696
QH134_33 Main wall material: Briques	.03	.172	1696
QH134_34 Main wall material: Blocs de ciment	.05	.224	1696
QH134_35 Main wall material: Adobe recouvert	.06	.231	1696
QH134_96 Main wall material: Autre	.00	.064	1696
LAND Owns land	.16	.365	1696
memsleep Number of members per sleeping room	2.33	1.463	1696

QH1171 Tracteur	.005	0.059216278	-0.000457404
QH117J Motoculteur	.011	0.112304305	-0.001002121
QH117K Semoir motorisé	.007	0.074019694	-0.000616097
QH117L Moto tricycle	.002	0.011304609	-0.000407436
MOBPHONE Owns a mobile phone	.048	0.010558836	-0.216121992
CHECKACC Possession of a bank account	.067	0.080008225	-0.055501666
QH132_11 Main floor material: Terre/sable/gravier	-.068	-0.118314431	0.039438144
QH132_12 Main floor material: Bouse	-.006	-0.109443325	0.000323605
QH132_21 Main floor material: Planches en bois	-.004	-0.113266047	0.000133726
QH132_22 Main floor material: Palmes/bambou	-.022	-0.265974323	0.001895304
QH132_31 Main floor material: Parquet ou bois ciré	.002	0.028915113	-0.00015426
QH132_33 Main floor material: Carrelage	.065	0.12290097	-0.034412272
QH132_34 Main floor material: Ciment	.009	0.008543559	-0.008747462
QH132_35 Main floor material: Moquette	.006	0.063749633	-0.000530615
QH132_96 Main floor material: Autre	.001	0.051394984	-3.03215E-05
QH133_11 Main roof material: Pas de toit	-.004	-0.116702331	-0.000137783
QH133_12 Main roof material: Chaume/palmes/feuilles/tiges de mil	-.032	-0.247777961	0.004008391
QH133_13 Main roof material: Mottes de terre	-.025	-0.078889285	0.008217634
QH133_21 Main roof material: Natte	-.018	-0.179801421	0.001712394
QH133_22 Main roof material: Palmes/bambou	-.020	-0.24191993	0.001579299
QH133_23 Main roof material: Planches en bois	-.003	-0.016151284	0.000400122
QH133_25 Main roof material: Bache/plastique	-.030	-0.249764876	0.003585142
QH133_31 Main roof material: Tole	-.004	-0.00471587	0.003958876
QH133_32 Main roof material: Bois	-.028	-0.124798266	0.006178132
QH133_33 Main roof material: Zinc/fibre de ciment	.023	0.150796551	-0.003456133
QH133_34 Main roof material: Tuiles	.009	0.105475647	-0.000751608
QH133_35 Main roof material: Ciment	.058	0.092593116	-0.036126494
QH133_36 Main roof material: Shingles	-.007	-0.069929674	0.000792286
QH133_96 Main roof material: Carton ou Autre	-.027	-0.272968396	0.002599699
QH134_11 Main wall material: Pas de mur	-.072	-0.233590072	0.002002678
QH134_12 Main wall material: Bambou/cane/palme/tronc	-.007	-0.120460594	0.000356182
QH134_13 Main wall material: Terre	-.027	-0.090108492	0.008233852
QH134_21 Main wall material: Bambou avec boue	-.006	-0.069469361	0.000536602
QH134_22 Main wall material: Pierres avec boue	-.002	-0.037704834	8.91367E-05
QH134_23 Main wall material: Adobe non recouvert	-.015	-0.104535836	0.002202742
QH134_31 Main wall material: Ciment	.069	0.051200369	-0.094253276
QH134_32 Main wall material: Pierres avec chaux/ciment	.006	0.092308054	-0.000382567
QH134_33 Main wall material: Briques	-.003	-0.01712791	0.000541759
QH134_34 Main wall material: Blocs de ciment	.007	0.028852608	-0.001616896
QH134_35 Main wall material: Adobe recouvert	-.014	-0.057276594	0.003436596
QH134_96 Main wall material: Autre	-.008	-0.129765471	0.000537808
LAND Owns land	-.027	-0.061233139	0.011542897
memsleep Number of members per sleeping room	-.044	((memsleep-2.33195754716981)/1.46263347996748)*(-0.0439302572751501)	

Extraction Method: Principal Component Analysis.  
Component Scores.



Not used Used

## Component Score Coefficient Matrix

Descriptive Statistics					Component		Sum over each variable	
	Mean	Std. Deviation <sup>a</sup>	Analysis N <sup>b</sup>	Missing N <sup>c</sup>	1	2	If has	If does not have
QH101_11 Source of drinking water: Robinent dans logement	.01	.102	3931	0	-.002	-.039	0.376795676	-0.003971368
QH101_12 Source of drinking water: Robinent dans cour/parcelle	.04	.187	3931	0	-.008	.077	0.394729965	-0.014901369
QH101_13 Source of drinking water: Robinent chez un voisin	.01	.098	3931	0	-.008	.026	0.260098441	-0.002538849
QH101_14 Source of drinking water: Robinent public/borne fontaine	.22	.415	3931	0	-.005	.007	0.014027339	-0.003992764
QH101_21 Source of drinking water: Puits à pompe ou forage	.31	.463	3931	0	.023	-.011	-0.01593405	0.007187674
QH101_31 Source of drinking water: Puits protégé	.15	.358	3931	0	-.008	-.014	-0.03301171	0.00585293
QH101_32 Source of drinking water: Puits non protégé	.21	.406	3931	0	.012	-.033	-0.06407122	0.016809951
QH101_41 Source of drinking water: Source protégée	.01	.075	3931	0	.001	.009	0.121776994	-0.000685366
QH101_42 Source of drinking water: Source non protégée	.01	.113	3931	0	-.006	-.006	-0.05633045	0.000740426
QH101_51 Source of drinking water: Eau de pluie	.02	.145	3931	0	-.046	-.001	-0.00610614	0.000133329
QH101_61 Source of drinking water: Camion citerne	.00	.016	3931	0	-.006	-.001	-0.07593086	1.93208E-05
QH101_71 Source of drinking water: Charrette avec petite citerne/tonneau	.00	.032	3931	0	-.004	.014	0.453501162	-0.000461931
QH101_81 Source of drinking water: Eau de surface (rivière/barrage/lac/mare/leveue canal/canal d'irrigation)	.01	.104	3931	0	-.004	-.010	-0.09518573	0.001052723
QH101_92 Source of drinking water: Eau en sachet	.00	.023	3931	0	.000	.005	0.212756473	-0.000108301
QH105_11 Type of toilet facility: Chasse d'eau connectée à un système d'égout	.00	.023	3931	0	.001	.020	0.90204048	-0.000459171
QH105_12 Type of toilet facility: Chasse d'eau connectée à une fosse septique	.00	.042	3931	0	-.002	.020	0.475212541	-0.000847745
QH105_13 Type of toilet facility: Chasse d'eau connectée à une fosse d'aisances	.00	.036	3931	0	-.006	.044	1.245764036	-0.001586556
QH105_21 Type of toilet facility: Fosse d'aisances améliorée auto-aérée	.01	.111	3931	0	.001	.020	0.182157643	-0.002299259
QH105_22 Type of toilet facility: Fosse d'aisances avec dalle	.28	.447	3931	0	.031	.049	0.079132301	-0.030245011
QH105_23 Type of toilet facility: Fosse d'aisances sans dalle trou ouvert	.35	.477	3931	0	.042	-.032	-0.04297723	0.023249149
QH105_31 Type of toilet facility: Toilettes à compostage	.01	.076	3931	0	.002	-.010	-0.13155537	0.000774251
QH105_51 Type of toilet facility: Toilettes/latrines suspendues	.02	.134	3931	0	.012	.002	0.01612697	-0.000300892
QH105_61 Type of toilet facility: Pas de toilettes/nature	.19	.391	3931	0	-.081	-.044	-0.09246645	0.021371826
QH105_96 Type of toilet facility: Seau/tinette, Autre	.00	.023	3931	0	-.002	-.001	-0.0479816	2.44243E-05
QH105_21_sh Type of toilet facility: Fosse d'aisances améliorée auto-aérée - shared	.00	.045	3931	0	-.002	.007	0.158967174	-0.000324175
QH105_22_sh Type of toilet facility: Fosse d'aisances avec dalle - shared	.07	.255	3931	0	-.007	.031	0.112072293	-0.008396994
QH105_23_sh Type of toilet facility: Fosse d'aisances sans dalle trou ouvert - shared	.07	.253	3931	0	-.008	-.012	-0.04477562	0.003302217
QH105_51_sh Type of toilet facility: Toilettes/latrines suspendues - shared	.00	.060	3931	0	.001	.014	0.236949893	-0.000846898
QH109_3 Type of cookstove: Cuisinière a gaz propane liquéfié (GPL)/Cuisinière a gaz	.00	.036	3931	0	-.003	.031	0.857003474	-0.001091446
QH109_7 Type of cookstove: Cuisinière d'un fabricant a combustible solide	.18	.385	3931	0	-.044	.030	0.063999091	-0.01410722
QH109_8 Type of cookstove: Cuisinière traditionnelle a combustible solide	.19	.395	3931	0	-.007	.033	0.067605661	-0.016229624
QH109_9 Type of cookstove: Foyer à trois pierres/foyer ouvert	.59	.492	3931	0	.061	-.049	-0.04102686	0.059394421
QH109_95 Type of cookstove: Pas de cuisine dans le ménage	.03	.179	3931	0	-.056	-.008	-0.04449878	0.001521926
QH110_3 Type of cooking fuel: Alcool/éthanol ou Paraffine/Petrole	.00	.016	3931	0	-.001	.002	0.153179266	-3.89769E-05
QH110_4 Type of cooking fuel: Charbon/lignite	.00	.016	3931	0	.000	.012	0.779181591	-0.000198265
QH110_5 Type of cooking fuel: Charbon de bois	.09	.282	3931	0	-.028	.083	0.267399253	-0.025480787
QH110_6 Type of cooking fuel: Bois	.86	.346	3931	0	.058	-.064	-0.02575981	0.159362341
QH110_9 Type of cooking fuel: Bouse d'animal/déchets	.02	.129	3931	0	-.017	-.007	-0.05597092	0.00097051
QH110_96 Type of cooking fuel: Autre	.00	.016	3931	0	.003	.001	0.038170939	-9.71271E-06
QH116A Electricity	.13	.337	3931	0	-.002	.107	0.277438894	-0.041640185
QH116B Radio	.65	.477	3931	0	.058	.033	0.024241708	-0.045113571
QH116C Television	.33	.470	3931	0	.048	.087	0.123875867	-0.060647071
QH116D Telephone (non-mobile)	.01	.084	3931	0	-.003	.026	0.311374301	-0.0022379
QH116E Computer	.01	.112	3931	0	-.006	.081	0.71621589	-0.009227208
QH116F Refrigerator	.04	.200	3931	0	.000	.098	0.470889082	-0.020500613
QH116G Chaise en matériaux traditionnels	.65	.478	3931	0	.079	.010	0.007039152	-0.012939843
QH116H Armoire/Bibliothèque	.10	.304	3931	0	.018	.088	0.259206713	-0.029772751
QH116I Réchaud	.01	.111	3931	0	-.004	.063	0.55919022	-0.0070583
QH116J Cuisinière, à gaz ou électricité	.02	.139	3931	0	-.004	.091	0.63610529	-0.012877294
QH116K Un foyer amélioré	.10	.294	3931	0	.018	.036	0.110858507	-0.011725119
QH116L Un climatiseur	.01	.097	3931	0	-.006	.064	0.651940973	-0.006194611
QH116M Un accès à l'internet à la maison	.11	.316	3931	0	.011	.060	0.167815403	-0.021205327
QH116N Un panneau solaire	.63	.483	3931	0	-.083	-.017	-0.01264789	0.021640977
QH166O Un groupe électrogène	.01	.110	3931	0	.005	.015	0.136619367	-0.001689831
QH117B Bicycle	.45	.497	3931	0	.084	-.005	-0.00569444	0.004578549
QH117C Motorcycle or scooter	.58	.494	3931	0	.051	.028	0.024231702	-0.032841289
QH117D Animal-drawn cart	.53	.499	3931	0	.084	-.035	-0.03292708	0.037803163
QH117E Car or Truck	.03	.170	3931	0	-.028	.049	0.276880018	-0.008493697
QH117F Boat with a motor	.01	.078	3931	0	.001	.002	0.025056688	-0.000153919
QH117G Charrue	.50	.500	3931	0	.089	-.030	-0.03014921	0.030753432
QH117H Pirogue	.06	.233	3931	0	-.008	-.013	-0.05094159	0.00312196
QH117I Tracteur	.02	.126	3931	0	.010	.012	0.09690025	-0.001578262
QH117J Motoculteur	.02	.129	3931	0	.007	.009	0.067765248	-0.0001175019
QH117K Semoir motorisé	.09	.284	3931	0	.047	-.007	-0.02291274	0.002225407
QH117L Moto tricycle	.05	.224	3931	0	.015	.031	0.129370799	-0.007264508
MOBPHONE Owns a mobile phone	.89	.317	3931	0	.070	.027	0.009562462	-0.075099787
CHECKACC Possession of a bank account	.11	.317	3931	0	.019	.073	0.20482763	-0.026146958
QH132_11 Main floor material: Terre/sable/gravier	.66	.475	3931	0	-.049	-.092	-0.06667461	0.126612915
QH132_12 Main floor material: Bouse	.02	.153	3931	0	.010	-.007	-0.04350552	0.001065812
QH132_21 Main floor material: Planches en bois	.00	.016	3931	0	.002	-.001	-0.05528452	1.40673E-05
QH132_22 Main floor material: Palmes/bambou	.01	.080	3931	0	.000	-.001	-0.01497851	9.58686E-05

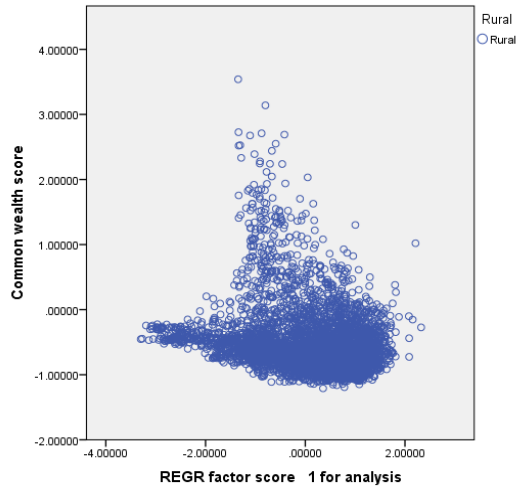
QH132_31 Main floor material: Parquet ou bois ciré	.00	.045	3931	0
QH132_32 Main floor material: Bandes de vinyle/asphalte	.00	.028	3931	0
QH132_33 Main floor material: Carrelage	.01	.103	3931	0
QH132_34 Main floor material: Ciment	.29	.452	3931	0
QH132_35 Main floor material: Moquette	.01	.120	3931	0
QH132_96 Main floor material: Autre	.00	.023	3931	0
QH133_11 Main roof material: Pas de toit	.00	.039	3931	0
QH133_12 Main roof material: Chaume/palmes/feuilles/tiges de mil	.06	.246	3931	0
QH133_13 Main roof material: Mottes de terre	.31	.461	3931	0
QH133_21 Main roof material: Natte	.02	.127	3931	0
QH133_22 Main roof material: Palmes/bambou	.01	.121	3931	0
QH133_23 Main roof material: Planches en bois	.02	.144	3931	0
QH133_25 Main roof material: Bache/plastique	.01	.117	3931	0
QH133_31 Main roof material: Toile	.44	.496	3931	0
QH133_32 Main roof material: Bois	.06	.242	3931	0
QH133_33 Main roof material: Zinc/fibre de ciment	.00	.036	3931	0
QH133_34 Main roof material: Tuiles	.00	.016	3931	0
QH133_35 Main roof material: Ciment	.04	.200	3931	0
QH133_36 Main roof material: Shingles	.01	.075	3931	0
QH133_96 Main roof material: Carton ou Autre	.01	.108	3931	0
QH134_11 Main wall material: Pas de mur	.19	.389	3931	0
QH134_12 Main wall material: Bambou/cane/palme/tronc	.05	.228	3931	0
QH134_13 Main wall material: Terre	.23	.422	3931	0
QH134_21 Main wall material: Bambou avec boue	.04	.190	3931	0
QH134_22 Main wall material: Pierres avec boue	.01	.086	3931	0
QH134_23 Main wall material: Adobe non recouvert	.08	.278	3931	0
QH134_31 Main wall material: Ciment	.10	.301	3931	0
QH134_32 Main wall material: Pierres avec chaux/ciment	.00	.042	3931	0
QH134_33 Main wall material: Briques	.03	.172	3931	0
QH134_34 Main wall material: Blocs de ciment	.01	.075	3931	0
QH134_35 Main wall material: Adobe recouvert	.25	.432	3931	0
QH134_36 Main wall material: Planche en bois/shingles	.01	.073	3931	0
QH134_96 Main wall material: Autre	.00	.062	3931	0
LAND Owns land	.77	.418	3931	0
memsleep Number of members per sleeping room	2.37	1.624	3931	0
QH113A_1 Cows/bulls: 1-4	.2882	.45299	3931	0
QH113A_2 Cows/bulls: 5-9	.0931	.29062	3931	0
QH113A_3 Cows/bulls: 10+	.1185	.32329	3931	0
QH113B_1 Other cattle: 1-4	.2162	.41173	3931	0
QH113B_2 Other cattle: 5-9	.0524	.22287	3931	0
QH113B_3 Other cattle: 10+	.0608	.23899	3931	0
QH113C_1 Horses/donkeys/mules: 1-4	.5406	.49841	3931	0
QH113C_2 Horses/donkeys/mules: 5-9	.0326	.17751	3931	0
QH113C_3 Horses/donkeys/mules: 10+	.0036	.05958	3931	0
QH113D_1 Goats: 1-4	.2292	.42037	3931	0
QH113D_2 Goats: 5-9	.1534	.36041	3931	0
QH113D_3 Goats: 10+	.2015	.40115	3931	0
QH113E_1 Sheep: 1-4	.2557	.43629	3931	0
QH113E_2 Sheep: 5-9	.1488	.35595	3931	0
QH113E_3 Sheep: 10+	.1590	.36572	3931	0
QH113F_1 Cochons: 1-4	.0112	.10522	3931	0
QH113F_2 Cochons: 5-9	.0028	.05283	3931	0
QH113F_3 Cochons: 10+	.0020	.04507	3931	0
QH113G_1 Chickens or other poultry: 1-9	.2531	.43485	3931	0
QH113G_2 Chickens or other poultry: 10-29	.2501	.43310	3931	0
QH113G_3 Chickens or other poultry: 30+	.0829	.27581	3931	0
QH113H_1 Camel: 1-4	.0142	.11852	3931	0
QH113H_2 Camel: 5-9	.0089	.09395	3931	0
QH113H_3 Camel: 10+	.0142	.11852	3931	0
landarea	4.3463	6.77082	3931	102

a. For each variable, missing values are replaced with the variable mean.

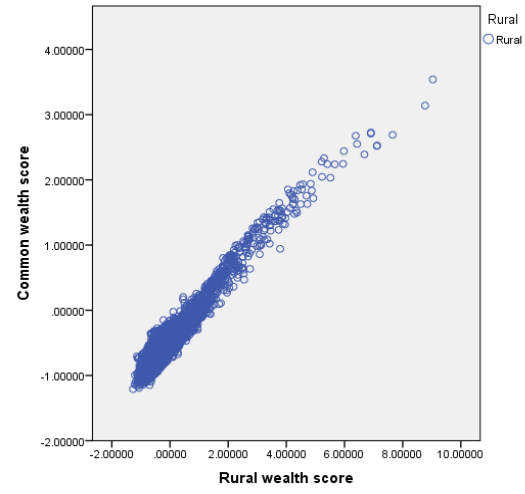
QH132_31 Main floor material: Parquet ou bois ciré	-.001	-.001	-.0115575	2.35687E-05
QH132_32 Main floor material: Bandes de vinyle/asphalte	-.001	.001	0.046752382	-3.5707E-05
QH132_33 Main floor material: Carrelage	-.009	.076	0.733183309	-0.007918154
QH132_34 Main floor material: Ciment	.049	.084	0.13282684	-0.05318752
QH132_35 Main floor material: Moquette	.006	-.008	-0.06778986	0.000997424
QH132_96 Main floor material: Autre	-.005	-.001	-0.03423142	1.7425E-05
QH133_11 Main roof material: Pas de toit	-.006	-.002	-0.06208272	0.94935E-05
QH133_12 Main roof material: Chaume/palmes/feuilles/tiges de mil	-.011	-.031	-0.11584885	0.000836305
QH133_13 Main roof material: Mottes de terre	-.022	-.039	-0.05879988	0.026022994
QH133_21 Main roof material: Natte	-.019	-.009	-0.07170599	0.001186755
QH133_22 Main roof material: Palmes/bambou	-.010	-.009	-0.07011064	0.00104994
QH133_23 Main roof material: Planches en bois	-.001	-.004	-0.02674633	0.000576909
QH133_25 Main roof material: Bache/plastique	-.043	-.008	-0.06383888	0.000905866
QH133_31 Main roof material: Toile	.077	.027	0.030211126	-0.023502097
QH133_32 Main roof material: Bois	-.043	-.007	-0.02562892	0.001710913
QH133_33 Main roof material: Zinc/fibre de ciment	-.007	.010	0.276191944	-0.000351747
QH133_34 Main roof material: Tuiles	.000	.003	0.166789328	-4.244E-05
QH133_35 Main roof material: Ciment	-.004	.096	0.458174148	-0.019947056
QH133_36 Main roof material: Shingles	-.022	-.004	-0.05233153	0.000294524
QH133_96 Main roof material: Carton ou Autre	-.026	-.014	-0.1300466	0.001539805
QH134_11 Main wall material: Pas de mur	-.067	-.032	-0.06729456	0.015398442
QH134_12 Main wall material: Bambou/cane/palme/tronc	.008	-.017	-0.06849132	0.003982268
QH134_13 Main wall material: Terre	-.023	-.012	-0.02120205	0.006423159
QH134_21 Main wall material: Bambou avec boue	.017	-.006	-0.02874848	0.001124709
QH134_22 Main wall material: Pierres avec boue	-.003	-.008	-0.09729937	0.000723137
QH134_23 Main wall material: Adobe non recouvert	.028	-.015	-0.04917125	0.004550869
QH134_31 Main wall material: Ciment	.008	.097	0.290769329	-0.03266424
QH134_32 Main wall material: Pierres avec chaux/ciment	-.005	-.001	-0.01379212	2.46037E-05
QH134_33 Main wall material: Briques	.006	.033	0.184425634	-0.005807157
QH134_34 Main wall material: Blocs de ciment	.002	.017	0.226986732	-0.00127749
QH134_35 Main wall material: Adobe recouvert	.047	-.020	-0.03447386	0.011401814
QH134_36 Main wall material: Planche en bois/shingles	-.001	-.006	-0.08506606	0.000456877
QH134_96 Main wall material: Autre	-.004	.000	-0.00756159	2.89642E-05
LAND Owns land	.082	-.051	-0.02747729	0.094159237
memsleep Number of members per sleeping room	-.047	-.024	((memsleep-2.37318748410074)/1.62405062976709)*(-0.0241566735962449)	
QH113A_1 Cows/bulls: 1-4	.033	-.030	-0.04757563	0.019264899
QH113A_2 Cows/bulls: 5-9	.006	-.011	-0.03372311	0.003462176
QH113A_3 Cows/bulls: 10+	.008	.000	-0.00119461	0.000160661
QH113B_1 Other cattle: 1-4	.039	-.026	-0.04969306	0.013709543
QH113B_2 Other cattle: 5-9	.021	-.005	-0.02134156	0.001180231
QH113B_3 Other cattle: 10+	.013	.002	0.008274134	-0.000535622
QH113C_1 Horses/donkeys/mules: 1-4	.065	-.048	-0.04406705	0.051850765
QH113C_2 Horses/donkeys/mules: 5-9	-.012	-.005	-0.02926993	0.000985157
QH113C_3 Horses/donkeys/mules: 10+	-.010	.001	0.010443962	-3.73284E-05
QH113D_1 Goats: 1-4	.019	-.029	-0.05401872	0.016062994
QH113D_2 Goats: 5-9	.016	-.019	-0.04550824	0.008245634
QH113D_3 Goats: 10+	-.008	-.017	-0.0330853	0.008347741
QH113E_1 Sheep: 1-4	.022	-.017	-0.02942359	0.010106189
QH113E_2 Sheep: 5-9	.016	-.008	-0.02022607	0.003536238
QH113E_3 Sheep: 10+	-.011	-.005	-0.01147216	0.002168814
QH113F_1 Cochons: 1-4	.007	-.009	-0.08177709	0.000925699
QH113F_2 Cochons: 5-9	.007	-.003	-0.04823727	0.00013536
QH113F_3 Cochons: 10+	.006	-.001	-0.01901247	3.87713E-05
QH113G_1 Chickens or other poultry: 1-9	.013	-.026	-0.04469204	0.015145975
QH113G_2 Chickens or other poultry: 10-29	.049	-.006	-0.01039207	0.003465198
QH113G_3 Chickens or other poultry: 30+	.036	.004	0.014803616	-0.00133869
QH113H_1 Camel: 1-4	-.015	-.011	-0.08938795	0.0012918
QH113H_2 Camel: 5-9	-.011	-.003	-0.03415607	0.000306844
QH113H_3 Camel: 10+	-.026	-.003	-0.02185208	0.000315798
landarea	.069	-.006	((landarea-4.34627840167146)/6.77082274002981)*(-0.00564028815120956)	

Extraction Method: Principal Component Analysis.  
Component Scores.

Component 1 - Not used



Component 2 - Used in place of component 1



Urban

**Coefficients<sup>a</sup>**

Model		Unstandardized Coefficients		Standardized Coefficients	t	Sig.
		B	Std. Error	Beta		
1	(Constant)	1.093	.006		177.216	0.000
	urbscore					
	Urban wealth score	.957	.006	.967	155.133	0.000

a. Dependent Variable: comscore Common wealth score

$$\text{Combined Score} = 1.09275273452176 + 0.956866760134699 * \text{Urban Score}$$

Rural

**Coefficients<sup>a</sup>**

Model		Unstandardized Coefficients		Standardized Coefficients	t	Sig.
		B	Std. Error	Beta		
1	(Constant)	-.471	.002		-219.540	0.000
	rurscore Rural					
	wealth score	.503	.002	.966	234.233	0.000

a. Dependent Variable: comscore Common wealth score

$$\text{Combined Score} = -0.471459841706665 + 0.503077710669338 * \text{Urban Score}$$

Combined Score

**Statistics**

combscor Combined national wealth score

N	Valid	5627
	Missing	0
Mean		.0220050
Std. Error of Mean		.01326246
Median		-.4349235
Mode		1.03658
Std. Deviation		.99486140
Skewness		1.131
Std. Error of Skewness		.033
Kurtosis		.211
Std. Error of Kurtosis		.065
Minimum		-1.55523
Maximum		4.07489
Percentiles	20	-.7656973
	40	-.5754216
	60	-.2057608
	80	1.0331158

a. Multiple modes exist. The smallest value is





	Ncombsco Combined wealth index					Nurbscor Urban wealth index					Nrurscor Rural wealth index				
	Lowest	Second	Middle	Fourth	Highest	Lowest	Second	Middle	Fourth	Highest	Lowest	Second	Middle	Fourth	Highest
QH101_11 Source of drinking water: Robinet dans logement	0.000	0.000	.003	.020	.136	.026	.050	.093	.118	.274	0.000	0.000	0.000	.003	.044
QH101_12 Source of drinking water: Robinet dans cour/parcelle	0.000	.000	.011	.116	.514	.176	.335	.497	.614	.630	0.000	0.000	.003	.019	.154
QH101_13 Source of drinking water: Robinet chez un voisin	.000	.002	.008	.079	.058	.168	.116	.085	.079	.008	0.000	.001	.003	.005	.041
QH101_14 Source of drinking water: Robinet public/borne fontaine	.173	.262	.262	.303	.168	.250	.288	.225	.110	.028	.153	.269	.247	.278	.297
QH101_21 Source of drinking water: Puits à pompe ou forage	.368	.324	.332	.241	.060	.105	.073	.031	.076	.023	.375	.318	.358	.323	.272
QH101_31 Source of drinking water: Puits protégé	.151	.138	.174	.145	.031	.172	.087	.036	.018	.005	.151	.136	.156	.186	.095
QH101_32 Source of drinking water: Puits non protégé	.282	.250	.189	.069	.002	.067	.006	0.000	0.000	0.000	.296	.257	.212	.162	.076
QH101_41 Source of drinking water: Source protégée	.001	.002	.005	.015	.011	.018	.009	.006	.012	.015	.001	.002	.001	.006	.015
QH101_42 Source of drinking water: Source non protégée	.013	.013	.012	.004	0.000	.009	0.000	0.000	0.000	0.000	.012	.013	.010	.015	.001
QH101_51 Source of drinking water: Eau de pluie	.000	.001	.001	.000	.000	.000	.000	0.000	0.000	0.000	0.000	.001	.002	.000	.000
QH101_61 Source of drinking water: Camion citerne	0.000	.000	0.000	.000	.000	.001	.000	.000	.000	0.000	0.000	.000	0.000	0.000	0.000
QH101_71 Source of drinking water: Charrette avec petite citerne/tonneau	0.000	0.000	.000	.004	.012	.001	.026	.018	.010	.003	0.000	0.000	0.000	0.000	.004
QH101_81 Source of drinking water: Eau de surface (rivière/barrage/lac/mare/fleuve/ canal/canal d'irrigation)	.012	.007	.003	.000	0.000	.007	0.000	0.000	0.000	0.000	.013	.004	.009	.002	0.000
QH101_91 Source of drinking water: Eau en bouteille	0.000	0.000	0.000	0.000	.002	0.000	0.000	.003	0.000	.007	0.000	0.000	0.000	0.000	0.000
QH101_92 Source of drinking water: Eau en sachet	0.000	0.000	0.000	.004	.004	0.000	.010	.005	.004	.006	0.000	0.000	0.000	0.000	.002
QH105_11 Type of toilet facility: Chasse d'eau connectée à un système d'égout	0.000	0.000	0.000	0.000	.065	0.000	.011	.014	.055	.206	0.000	0.000	0.000	0.000	.003
QH105_12 Type of toilet facility: Chasse d'eau connectée à une fosse septique	0.000	0.000	0.000	.005	.126	.006	.026	.026	.138	.358	0.000	0.000	0.000	0.000	.013
QH105_13 Type of toilet facility: Chasse d'eau connectée à une fosse d'aisances	0.000	0.000	0.000	.006	.065	.018	.012	.031	.072	.149	0.000	0.000	0.000	0.000	.011
QH105_14 Type of toilet facility: Chasse d'eau connectée à quelque chose d'autre	0.000	0.000	0.000	0.000	.007	0.000	0.000	.005	.015	.011	0.000	0.000	0.000	0.000	0.000
QH105_15 Type of toilet facility: Chasse d'eau connectée à ne sait pas où	0.000	0.000	0.000	0.000	.003	0.000	0.000	.002	.008	.002	0.000	0.000	0.000	0.000	0.000
QH105_21 Type of toilet facility: Fosse d'aisances améliorée auto-aérée	0.000	.011	.023	.014	.033	.012	.011	.014	.050	.033	0.000	.003	.022	.021	.028
QH105_22 Type of toilet facility: Fosse d'aisances avec dalle	.080	.204	.354	.489	.307	.302	.315	.357	.301	.179	.065	.155	.267	.429	.539
QH105_23 Type of toilet facility: Fosse d'aisances sans dalle trou ouvert	.455	.422	.380	.151	.014	.149	.009	.004	.010	.004	.478	.415	.424	.332	.144
QH105_31 Type of toilet facility: Toilettes à compostage	.050	.001	0.000	.001	.002	0.000	0.000	0.000	0.000	.010	.053	.014	0.000	0.000	.002

QH105_51 Type of toilet facility: Toilettes/latrines suspendues	.009	.023	.020	.020	.008	.018	.018	0.000	.011	0.000	.009	.023	.019	.017	.020
QH105_61 Type of toilet facility: Pas de toilettes/nature	.313	.198	.076	.006	.000	.040	0.000	0.000	0.000	0.000	.315	.250	.135	.049	.003
QH105_96 Type of toilet facility: Seau/tinette, Autre	.000	0.000	.001	0.000	0.000	.000	0.000	0.000	0.000	0.000	.000	0.000	0.000	.001	0.000
QH105_12_sh Type of toilet facility: Chasse d'eau connectée à une fosse septique shared	0.000	0.000	0.000	.012	.034	.038	.046	.069	.024	.005	0.000	0.000	0.000	0.000	0.000
QH105_13_sh Type of toilet facility: Chasse d'eau connectée à une fosse d'aisances - shared	0.000	0.000	0.000	.005	.026	.014	.036	.042	.039	0.000	0.000	0.000	0.000	0.000	0.000
QH105_21_sh Type of toilet facility: Fosse d'aisances amelioree auto-aeree - shared	.000	.002	.000	.003	.019	.007	.024	.015	.024	.016	.000	0.000	.003	0.000	.003
QH105_22_sh Type of toilet facility: Fosse d'aisances avec dalle - shared	.015	.037	.081	.236	.276	.318	.450	.407	.252	.026	.009	.036	.043	.098	.197
QH105_23_sh Type of toilet facility: Fosse d'aisances sans dalle trou ouvert - shared	.077	.100	.063	.035	.005	.064	.019	.003	0.000	0.000	.071	.103	.087	.047	.023
QH105_51_sh Type of toilet facility: Toilettes/latrines suspendues - shared	0.000	.001	.002	.016	.011	.014	.024	.011	0.000	0.000	0.000	.001	0.000	.007	.016
QH109_1 Type of cookstove: Cuisinière électrique	0.000	0.000	0.000	0.000	.003	0.000	0.000	0.000	.004	.011	0.000	0.000	0.000	0.000	0.000
QH109_3 Type of cookstove: Cuisinière a gaz prpane liquefie (GPL)/Cusiner a gaz	0.000	.000	0.000	.001	.022	.000	.008	.010	.010	.051	0.000	0.000	0.000	0.000	.009
QH109_4 Type of cookstove: Cusinière connectee au gaz natur	0.000	0.000	0.000	.000	.002	0.000	.000	0.000	.000	.007	0.000	0.000	0.000	0.000	0.000
QH109_5 Type of cookstove: Cusinière au biogaz ou combustible liquide	0.000	0.000	0.000	0.000	.004	0.000	0.000	.003	.004	.010	0.000	0.000	0.000	0.000	0.000
QH109_7 Type of cookstove: Cuisinière d'un fabricant a combustible solide	.097	.243	.186	.262	.299	.299	.268	.288	.251	.265	.070	.221	.240	.161	.316
QH109_8 Type of cookstove: Cusinière traditionnelle a combustible solide	.045	.166	.225	.304	.531	.398	.464	.534	.601	.609	.034	.109	.235	.219	.273
QH109_9 Type of cookstove: Foyer à trois pierres/foyer ouvert	.856	.581	.580	.411	.135	.268	.241	.158	.125	.048	.896	.664	.512	.615	.391
QH109_95 Type of cookstove: Pas de cuisine dans le ménage	.001	.010	.009	.022	.004	.035	.019	.006	.004	0.000	.000	.006	.013	.005	.012
QH110_3 Type of cooking fuel: Alcool/éthanol ou Paraffine/Petrole	0.000	0.000	0.000	.001	.001	0.000	0.000	0.000	0.000	.006	0.000	0.000	0.000	0.000	.001
QH110_4 Type of cooking fuel: Charbon/lignite	0.000	0.000	0.000	.004	.034	.007	.038	.027	.047	.041	0.000	0.000	0.000	0.000	.001
QH110_5 Type of cooking fuel: Charbon de bois	.000	.023	.091	.299	.682	.431	.551	.695	.742	0.000	.006	.055	.100	.330	
QH110_6 Type of cooking fuel: Bois	.993	.941	.892	.671	.243	.519	.380	.259	.205	.126	.995	.970	.911	.888	.647
QH110_9 Type of cooking fuel: Bouse d'animal/déchets	.006	.026	.006	0.000	.000	.003	0.000	0.000	0.000	0.000	.005	.017	.021	.005	.000
QH110_96 Type of cooking fuel: Autre	0.000	0.000	.002	.001	.006	.005	.003	0.000	.011	.011	0.000	0.000	0.000	.001	0.000
QH116A Electricity	.003	.016	.076	.428	.981	.434	.971	.990	.993	.991	.002	.012	.029	.110	.513
QH116B Radio	.564	.668	.749	.754	.776	.596	.710	.756	.801	.805	.555	.638	.694	.792	.818
QH116C Television	.075	.220	.447	.613	.946	.304	.800	.934	1.000	.998	.056	.168	.319	.535	.781
QH116D Telephone (non-mobile)	.001	.003	.008	.008	.060	.002	.007	.019	.033	.194	0.000	.005	.004	.006	.017
QH116E Computer	0.000	0.000	.000	.012	.289	.008	.020	.093	.332	.703	0.000	0.000	.000	.002	.072
QH116F Refrigerator	0.000	0.000	.007	.076	.491	.031	.126	.299	.563	.951	0.000	0.000	.002	.010	.190
QH116G Chaise en materiaux traditionnels	.622	.598	.788	.685	.658	.570	.655	.628	.718	.759	.642	.555	.718	.806	.647
QH116H Armoire/Bibliothèque	.002	.016	.109	.288	.777	.103	.465	.814	.905	.968	.002	.009	.046	.137	.438
QH116I Réchaud	0.000	0.000	.004	.024	.220	.003	.018	.077	.234	.596	0.000	0.000	.002	.007	.055
QH116J Cusinière, à gaz ou électricité	0.000	0.000	.003	.025	.318	.002	.054	.176	.373	.586	0.000	0.000	0.000	.004	.126
QH116K Un foyer amélioré	.024	.094	.177	.146	.197	.084	.082	.119	.156	.340	.011	.068	.152	.171	.219
QH116L Un climatiseur	0.000	0.000	.003	.008	.168	.003	.001	.024	.067	.589	0.000	0.000	0.000	.006	.037
QH116M Un accès à l'internet à la maison	.013	.057	.142	.253	.442	.275	.395	.369	.382	.618	.008	.048	.084	.169	.268
QH116N Un panneau solaire	.640	.658	.811	.532	.053	.240	.035	.021	.026	.107	.666	.599	.749	.831	.556
QH116O Un groupe électrogène	.006	.012	.005	.016	.036	.007	0.000	.003	.012	.124	.005	.008	.011	.009	.027
QH117B Bicycle	.454	.485	.584	.380	.275	.193	.172	.202	.285	.458	.485	.425	.546	.604	.410
QH117C Motorcycle or scooter	.437	.537	.718	.681	.807	.466	.689	.824	.881	.890	.446	.483	.616	.767	.739
QH117D Animal-drawn cart	.694	.497	.581	.339	.031	.224	.053	.018	.015	.024	.728	.509	.533	.602	.322
QH117E Car or Truck	.000	.002	.003	.029	.255	.010	.023	.089	.197	.699	.000	.002	.002	.004	.089
QH117F Boat with a motor	.003	.013	.007	.003	.006	.001	0.000	.003	.014	.008	.002	.006	.019	.004	.006
QH117G Charrue	.607	.501	.590	.333	.020	.198	.029	.009	.017	.014	.648	.466	.559	.603	.324
QH117H Pirogue	.057	.068	.038	.014	.004	.012	0.000	.003	.011	0.000	.060	.055	.071	.033	.010
QH117I Tracteur	.002	.011	.014	.027	.009	.003	0.000	.009	.011	.015	.002	.004	.015	.018	.036
QH117J Motoculteur	.001	.010	.019	.028	.012	.000	.002	.006	.014	.026	.001	.007	.017	.025	.033
QH117K Semoir motorisé	.086	.083	.105	.057	.012	.020	.003	.003	.010	.023	.086	.077	.099	.107	.064
QH117L Moto tricycle	.018	.023	.063	.088	.051	.030	.056	.029	.040	.031	.015	.024	.024	.082	.125
MOBPHONE Owns a mobile phone	.864	.907	.962	.986	.998	.966	.991	1.000	1.000	1.000	.864	.899	.927	.969	.991
CHECKACC Possession of a bank account	.004	.056	.150	.236	.580	.101	.237	.472	.661	.910	.004	.028	.114	.167	.363
QH132_11 Main floor material: Terre/sable/gravier	.955	.829	.458	.183	.062	.432	.116	.064	.043	.042	.967	.903	.669	.339	.091
QH132_12 Main floor material: Bouse	.022	.029	.025	.006	.001	.005	0.000	.005	0.000	0.000	.013	.039	.026	.022	.005
QH132_21 Main floor material: Planches en bois	.000	.001	0.000	0.000	.001	.000	.003	0.000	0.000	0.000	0.000	0.000	.002	0.000	0.000
QH132_22 Main floor material: Palmes/bambou	.002	.009	.009	.001	0.000	.013	0.000	0.000	0.000	0.000	0.000	.003	.010	.011	.000
QH132_31 Main floor material: Parquet ou bois ciré	.001	.000	.007	.002	.005	.005	0.000	.007	.010	.008	0.000	.002	.002	.008	0.000
QH132_32 Main floor material: Bandes de vinyle/asphalte	0.000	0.000	.002	0.000	0.000	0.000	0.000	0.000	0.000	0.000	0.000	0.000	0.000	.002	0.000
QH132_33 Main floor material: Carrelage	0.000	0.000	.001	.010	.337	.006	.024	.160	.418	.742	0.000	0.000	0.000	.001	.080

QH132_34 Main floor material: Ciment	0.000	.115	.486	.793	.583	.539	.858	.737	.515	.200	0.000	.036	.277	.608	.818
QH132_35 Main floor material: Moquette	.019	.017	.011	.004	.010	0.000	0.000	.023	.014	.009	.020	.018	.015	.008	.005
QH132_96 Main floor material: Autre	.000	0.000	0.000	.000	.001	0.000	0.000	.003	0.000	0.000	.000	0.000	0.000	.000	0.000
QH133_11 Main roof material: Pas de toit	.001	.000	.002	0.000	.001	.000	0.000	0.000	.006	0.000	.001	.000	.001	.002	0.000
QH133_12 Main roof material: Chaume/palmes/feuilles/tiges de mil	.158	.043	.014	.005	0.000	.042	0.000	0.000	0.000	0.000	.169	.067	.022	.006	.004
QH133_13 Main roof material: Mottes de terre	.537	.470	.286	.155	.028	.201	.064	.030	.016	.005	.547	.545	.359	.239	.109
QH133_21 Main roof material: Natte	.008	.018	.004	.003	0.000	.017	0.000	0.000	0.000	0.000	.005	.014	.013	.003	.000
QH133_22 Main roof material: Palmes/bambou	.013	.023	.003	.002	0.000	.006	0.000	0.000	0.000	0.000	.011	.012	.025	.004	.001
QH133_23 Main roof material: Planches en bois	.033	.022	.019	.018	.014	.020	.007	.035	.010	.003	.036	.026	.017	.018	.017
QH133_25 Main roof material: Bache/plastique	.001	.001	.002	.000	.001	.005	.003	0.000	0.000	0.000	.000	.001	.001	0.000	0.000
QH133_31 Main roof material: Tole	.205	.364	.636	.686	.446	.604	.751	.609	.405	.117	.190	.278	.512	.690	.609
QH133_32 Main roof material: Bois	.042	.058	.022	.030	.008	.073	.010	.009	.004	.001	.038	.055	.050	.014	.014
QH133_33 Main roof material: Zinc/fibre de ciment	0.000	0.000	.000	.003	.030	.003	.006	.009	.026	.090	0.000	0.000	0.000	.000	.004
QH133_34 Main roof material: Tuiles	0.000	0.000	0.000	.001	.010	0.000	.005	.017	.003	.019	0.000	0.000	0.000	0.000	.001
QH133_35 Main roof material: Ciment	0.000	0.000	.011	.098	.452	.026	.146	.282	.522	.752	0.000	0.000	0.000	.023	.240
QH133_36 Main roof material: Shingles	.000	.000	.000	0.000	.010	.001	.008	.009	.007	.014	.000	.000	.000	0.000	.002
QH133_96 Main roof material: Carton ou Autre	.001	.000	0.000	0.000	0.000	.002	0.000	0.000	0.000	0.000	.001	.000	.000	0.000	0.000
QH134_11 Main wall material: Pas de mur	.135	.093	.068	.045	.002	.099	.013	0.000	0.000	0.000	.126	.101	.090	.055	.032
QH134_12 Main wall material: Bambou/cane/palme/tronc	.098	.040	.035	.019	0.000	.006	0.000	0.000	0.000	0.000	.104	.050	.041	.038	.017
QH134_13 Main wall material: Terre	.250	.396	.251	.178	.012	.221	.047	.010	.001	0.000	.239	.390	.319	.232	.128
QH134_21 Main wall material: Bambou avec boue	.030	.034	.068	.018	.002	.029	.003	.005	.002	0.000	.030	.023	.061	.062	.010
QH134_22 Main wall material: Pierres avec boue	.061	.008	.003	.006	.000	.003	0.000	.002	0.000	0.000	.055	.034	0.000	.004	.007
QH134_23 Main wall material: Adobe non recouvert	.098	.106	.126	.033	.007	.067	.018	.003	.002	0.000	.102	.103	.120	.097	.023
QH134_31 Main wall material: Ciment	0.000	.004	.079	.401	.844	.329	.750	.806	.898	.940	0.000	.001	.010	.131	.502
QH134_32 Main wall material: Pierres avec chaux/ciment	0.000	.008	.010	.003	.002	.000	0.000	.003	0.000	.008	0.000	.010	.004	.013	0.000
QH134_33 Main wall material: Briques	.007	.023	.029	.083	.032	.056	.034	.011	.009	.015	.001	.024	.027	.038	.104
QH134_34 Main wall material: Blocs de ciment	0.000	0.000	.005	.025	.070	.033	.069	.122	.074	.032	0.000	0.000	0.000	.011	.019
QH134_35 Main wall material: Adobe recouvert	.311	.280	.300	.176	.027	.150	.066	.038	.014	.005	.329	.261	.302	.298	.147
QH134_36 Main wall material: Planche en bois/shingles	.011	.002	.004	.001	0.000	0.000	0.000	0.000	0.000	0.000	.014	.002	.001	.006	.002
QH134_96 Main wall material: Autre	.001	.007	.023	.012	0.000	.007	0.000	0.000	0.000	0.000	.001	.001	.027	.015	.010
LAND Owns land	.963	.874	.870	.532	.115	.323	.142	.082	.069	.135	.975	.901	.873	.868	.529
memsleep Number of members per sleeping room	2.359	2.121	2.106	2.240	2.029	2.682	2.465	2.251	2.001	1.633	2.336	2.225	2.130	2.021	1.963
QH113A_1 Cows/bulls: 1-4	.380	.303	.270	.156	.019	.101	.025	.020	.025	.015	.402	.299	.306	.260	.146
QH113A_2 Cows/bulls: 5-9	.085	.076	.099	.056	.004	.030	.006	.004	.002	0.000	.083	.076	.087	.102	.057
QH113A_3 Cows/bulls: 10+	.078	.065	.127	.100	.010	.038	.004	.003	.002	.021	.080	.051	.094	.148	.110
QH113B_1 Other cattle: 1-4	.311	.194	.193	.128	.012	.079	.024	.003	.002	.014	.335	.193	.205	.203	.123
QH113B_2 Other cattle: 5-9	.038	.052	.068	.030	.001	.011	0.000	0.000	0.000	0.000	.041	.045	.045	.079	.033
QH113B_3 Other cattle: 10+	.050	.038	.061	.058	.004	.017	.004	0.000	0.000	.009	.056	.029	.047	.071	.066
QH113C_1 Horses/donkeys/mules: 1-4	.733	.492	.522	.298	.028	.225	.052	.015	.010	.031	.780	.497	.517	.535	.271
QH113C_2 Horses/donkeys/mules: 5-9	.014	.011	.025	.017	.001	.002	0.000	0.000	.004	0.000	.011	.014	.015	.032	.018
QH113C_3 Horses/donkeys/mules: 10+	.000	.002	.000	.001	.001	.001	.004	0.000	0.000	0.000	.000	.001	.002	0.000	.002
QH113D_1 Goats: 1-4	.357	.248	.216	.121	.033	.111	.060	.025	.045	.010	.375	.275	.214	.230	.094
QH113D_2 Goats: 5-9	.206	.149	.145	.090	.010	.065	.016	.012	.006	.003	.219	.146	.157	.140	.087
QH113D_3 Goats: 10+	.138	.161	.203	.094	.010	.058	.021	0.000	.002	.014	.141	.138	.188	.207	.090
QH113E_1 Sheep: 1-4	.352	.279	.283	.185	.108	.162	.084	.101	.127	.076	.367	.280	.303	.263	.195
QH113E_2 Sheep: 5-9	.173	.142	.148	.107	.055	.054	.043	.055	.068	.053	.188	.138	.128	.169	.112
QH113E_3 Sheep: 10+	.095	.096	.146	.100	.030	.036	.029	.007	.021	.056	.104	.078	.133	.143	.113
QH113F_1 Cochons: 1-4	.022	.010	.008	.001	.003	0.000	.006	0.000	0.000	.003	.025	.013	.008	.004	.002
QH113F_2 Cochons: 5-9	.003	.003	.002	.002	.000	0.000	.000	0.000	.002	0.000	.004	.003	.002	.001	.002
QH113F_3 Cochons: 10+	.002	.002	.001	.001	0.000	0.000	0.000	0.000	0.000	0.000	.002	.001	.003	.002	.002
QH113G_1 Chickens or other poultry: 1-9	.388	.242	.233	.163	.083	.169	.086	.079	.114	.040	.408	.265	.261	.200	.155
QH113G_2 Chickens or other poultry: 10-29	.241	.249	.290	.223	.102	.107	.099	.104	.112	.089	.258	.219	.263	.323	.236
QH113G_3 Chickens or other poultry: 30+	.054	.080	.118	.076	.035	.028	.015	.035	.037	.056	.056	.061	.101	.127	.085
QH113H_1 Camel: 1-4	.013	.006	.008	.004	.002	.005	.003	0.000	0.000	.003	.015	.004	.011	.004	.004
QH113H_2 Camel: 5-9	.005	.007	.016	.006	0.000	.001	0.000	0.000	0.000	0.000	.002	.005	.013	.020	.004
QH113H_3 Camel: 10+	.001	.005	.008	.010	.002	.004	.004	0.000	0.000	.004	.002	.001	.008	.011	.010
landarea	4.343	4.639	5.417	3.363	.487	.933	.259	.103	.120	.743	4.453	4.188	5.392	5.510	3.890